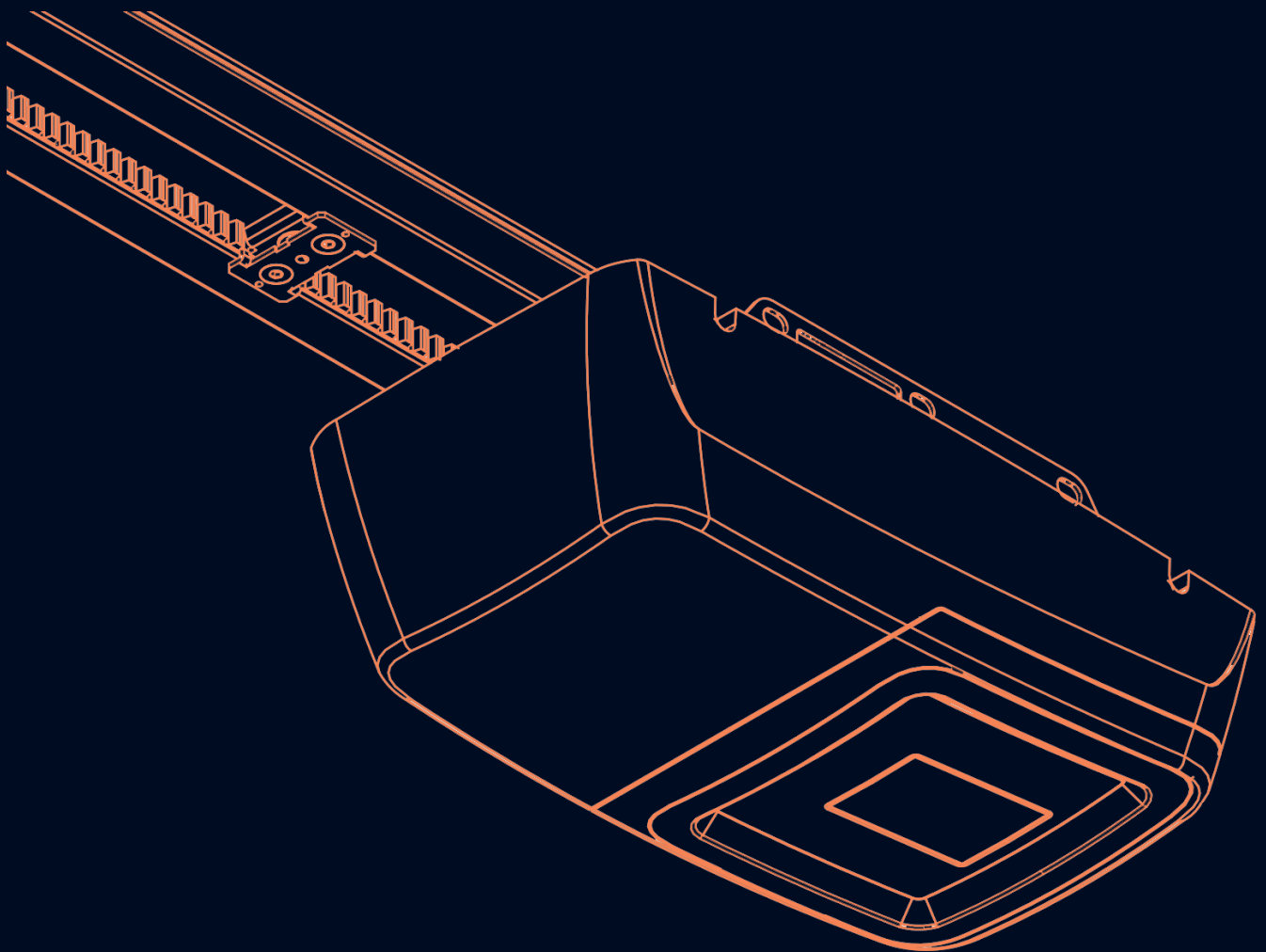


# Garage door operators





## GTA 105 & 106

The GTA105 is a self-locking garage door operator with a force of 700N, suitable for garage doors up to a maximum of 12 m<sup>2</sup>, while the GTA106 with a force of 900N is suitable for garage doors up to 14 m<sup>2</sup>. Both models are supplied as standard with one 4-channel hand transmitter. The terminal strip includes connections for a push button, 2-wire photocell, pedestrian door contact, warning light (24Vdc / max. 3W), and power supply for external accessories.

The integrated microprocessor control can be easily configured using the easily accessible push buttons and display and includes: electronic obstacle detection, automatic closing, partial opening, lighting, and receiver for hand transmitters (868 MHz / Keeloq). Thanks to the integrated WiFi module, the door can be operated via a mobile phone or tablet using the intuitive app. The app also makes it possible to read the door status.

As a drive medium, you can choose a one-piece guide rail available in 4 different lengths (see drawing). All guide rails are equipped with: reinforced toothed belt, patented anti-lift protection, emergency release and tensioning option. A one-piece guide rail in 3 lengths (up to maximum door height: 3,125 mm) is also available, equipped with: toothed strip, emergency release and tensioning option.

18V + WiFi + ECO



## Technical data

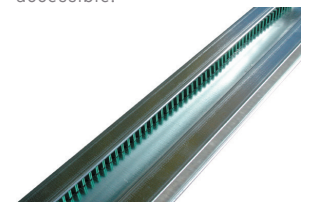
	GTA105	GTA106
Main supply:	1N~230/240VAC - 50HZ	1N~230/240VAC - 50HZ
Power:	300W	320W
Force:	700N	900N
Max. opening speed:	200MM/S	200MM/S
Max. closing speed:	140MM/S	140MM/S
Cycles/hour:	5	8
Cycles/24 hours:	12	20
Operating temperature:	-20...+55°C	-20...+55°C
Noise level:	<70DB	<70DB
Max. door size:	12M <sup>2</sup>	14M <sup>2</sup>
Max. door weight:	100KG	140KG
Standby consumption:	0,6W IN ENERGY-SAVING MODE / 0,9W WITHOUT ENERGY-SAVING MODE	0,6W IN ENERGY-SAVING MODE / 0,9W WITHOUT ENERGY-SAVING MODE
Max. cycles per hour/day:	5/12	8/20

## Highlights



### Display

The display, programming buttons and connection terminals are easily accessible.



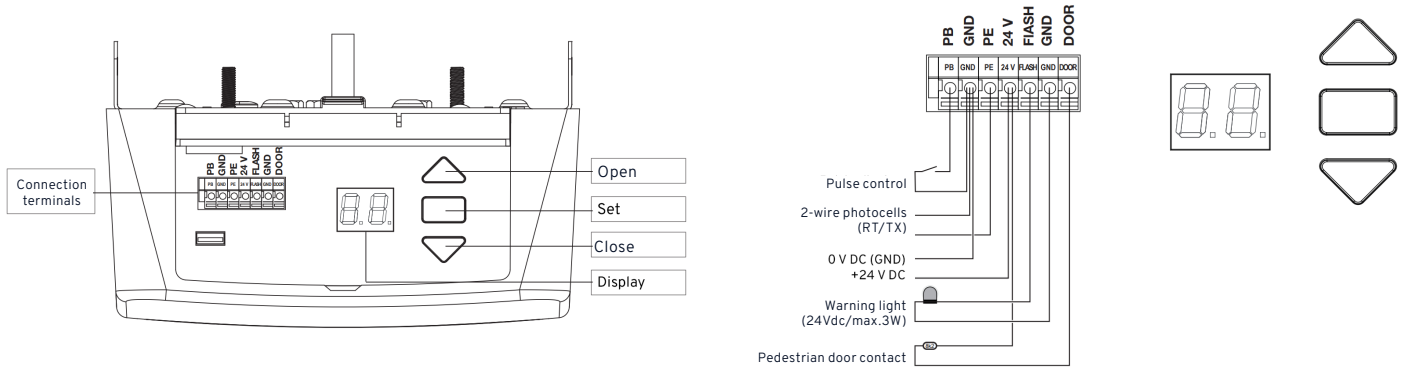
### Guide rail with toothed belt

The reinforced toothed belt guarantees quiet operation of the operator.

Garage door operators



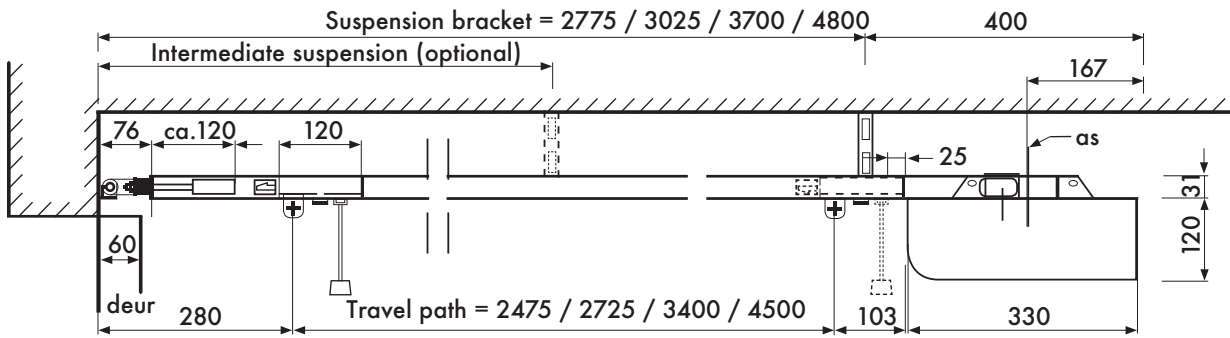
Wiring diagram



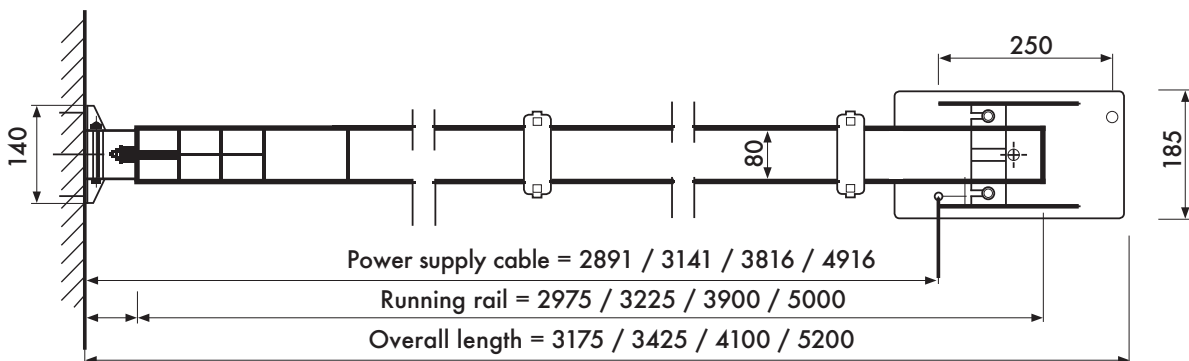
PB / GND:	PULSE CONTROL
PE / GND:	2-WIRE PHOTOCELLS
24 V / GND:	POWER SUPPLY FOR EXTERNAL ACCESSORIES (24VDC/200MA)
FLASH / GND:	WARNING LIGHTS (24VDC/MAX. 3W)
DOOR / 24 V:	PEDESTRIAN DOOR CONTACT (8,2KOHM)

Technical drawing

Elevation view (side)



Plan view



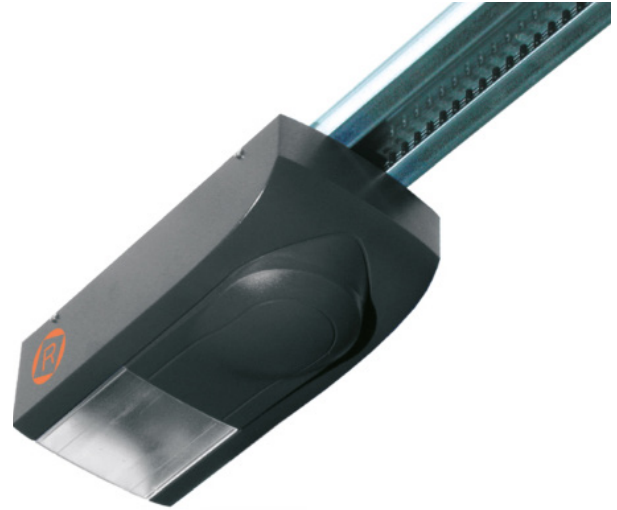


## GTA 453 BATTERY/SOLAR

The GTA453 BATTERY/SOLAR is a self-locking garage door operator that does not require mains power thanks to the high-efficiency solar panel and durable battery. The GTA453 BATTERY/SOLAR is suitable for garage doors up to a maximum of 7 m<sup>2</sup>.

The integrated microprocessor control is easy to configure and includes: electronic obstacle detection, automatic closing, partial opening, 12V halogen lighting and 1-channel plug-in receiver with 1 piece 4-channel hand transmitter.

As a drive medium, you can choose a one-piece guide rail available in 4 different lengths (see drawing). All guide rails are equipped with: reinforced toothed belt, patented anti-lift protection, emergency release and tensioning option. A one-piece guide rail in 3 lengths (up to maximum door height: 3,125 mm) is also available, equipped with: toothed strip, emergency release and tensioning option.



### Technical data

GTA453 ACCU/SOLAR	
Power:	250W
Force:	400N
Cycles/24 hours:	100
Max. opening/closing speed:	135MM/S
Operating temperature:	-20...+60°C
Noise level:	<70DB
Max. door size:	7M <sup>2</sup>
Standby consumption:	0,5W

### Highlights



#### Battery

A fully charged battery guarantees 4 cycles per day for 40 days.

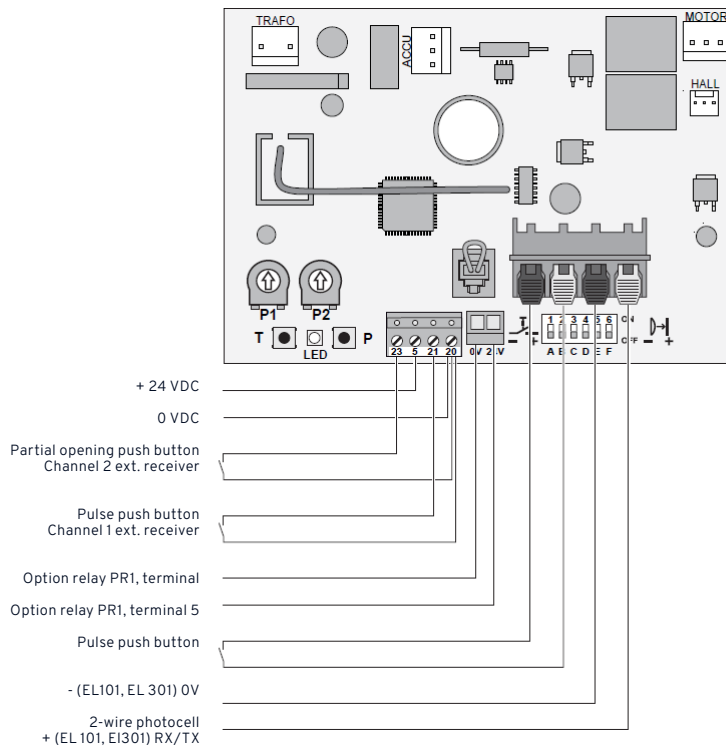


#### Solar panel

Let the sun work for you – the sun provides the power for your garage door.

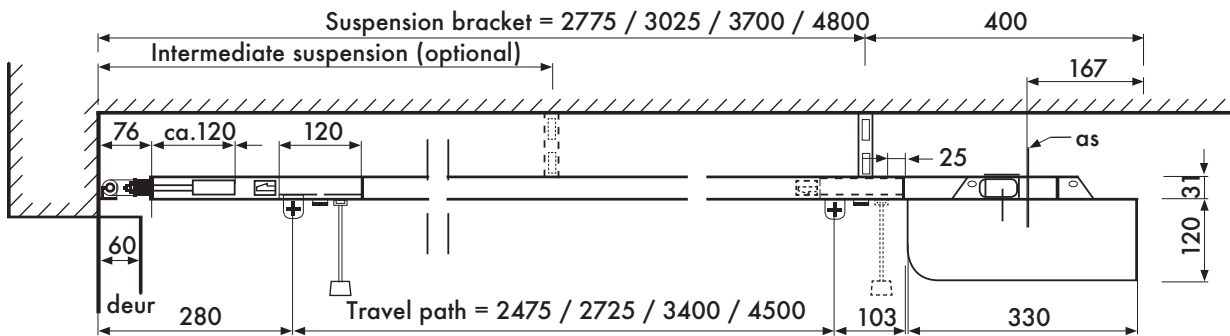


### Wiring diagram

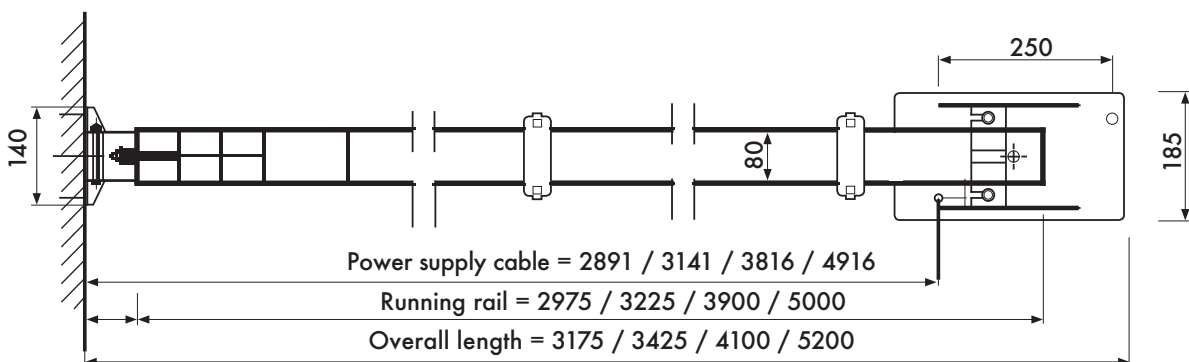


### Technical drawing

Elevation view (side)



Plan view



## Garage door operators



## GTA 205 &amp; 405

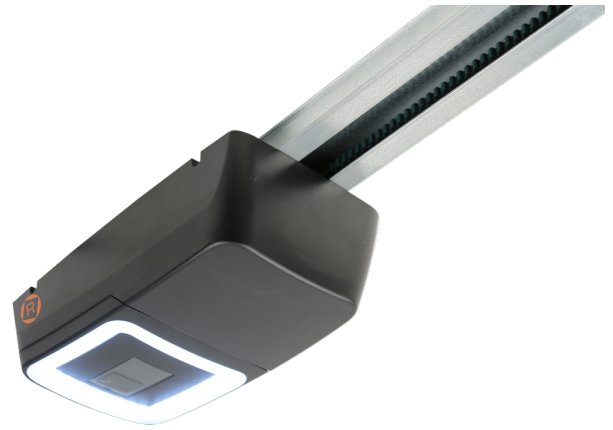
The GTA205 is a self-locking garage door operator with a force of 750N, suitable for garage doors up to a maximum of 12 m<sup>2</sup>, while the GTA405 with a force of 1000N is suitable for garage doors up to 15 m<sup>2</sup>.

The integrated microprocessor control can be easily configured via a very extensive menu and includes: adjustable speed (up to 22 cm/s in opening direction), energy-saving mode (consumes only 0.6W!), electronic obstacle detection, automatic closing, partial opening, adjustable soft start and soft stop, programmable inputs and outputs and much more. Please contact us for the possibilities.

Thanks to the integrated Bluetooth module, the door can be programmed via a mobile phone or tablet using the intuitive app. The app also allows you to read the door status.

With the HCP2 bus interface, it is possible to operate the door via: Homematic IP Smart Home system, KNX building automation, Loxone building automation, Apple Home, Google Home and Amazon Alexa. See accessories for the various modules.

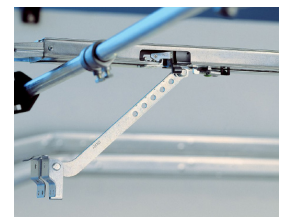
As a drive medium, you can choose a one-piece guide rail available in 4 different lengths (see drawing). All guide rails are equipped with: reinforced toothed belt, patented anti-lift protection, emergency release and tensioning option. A one-piece guide rail in 3 lengths (up to maximum door height: 3,125 mm) is also available, equipped with: toothed strip, emergency release and tensioning option.



## Technical data

	GTA205	GTA405
<b>Mains supply:</b>	1N~230/240VAC-50HZ	1N~230/240VAC-50HZ
<b>Power:</b>	300W	400W
<b>Force:</b>	750N	1000N
<b>Max. opening speed:</b>	220MM/S	220MM/S
<b>Max. closing speed:</b>	135MM/S	135MM/S
<b>Cycles/hour:</b>	10	10
<b>Cycles/24 hours:</b>	25	100
<b>Operating temperature:</b>	-20...+60°C	-20...+60°C
<b>Noise level:</b>	<70DB	<70DB
<b>Max. door size:</b>	12M <sup>2</sup>	15M <sup>2</sup>
<b>Max. door weight:</b>	165KG	200KG
<b>Standby consumption:</b>	0,6W IN ENERGY-SAVING MODE / 0,9W WITHOUT ENERGY-SAVING MODE	0,6W IN ENERGY-SAVING MODE / 0,9W WITHOUT ENERGY-SAVING MODE

## Highlights

**Anti-lift protection**

The patented anti-lift protection keeps unwanted guests out.

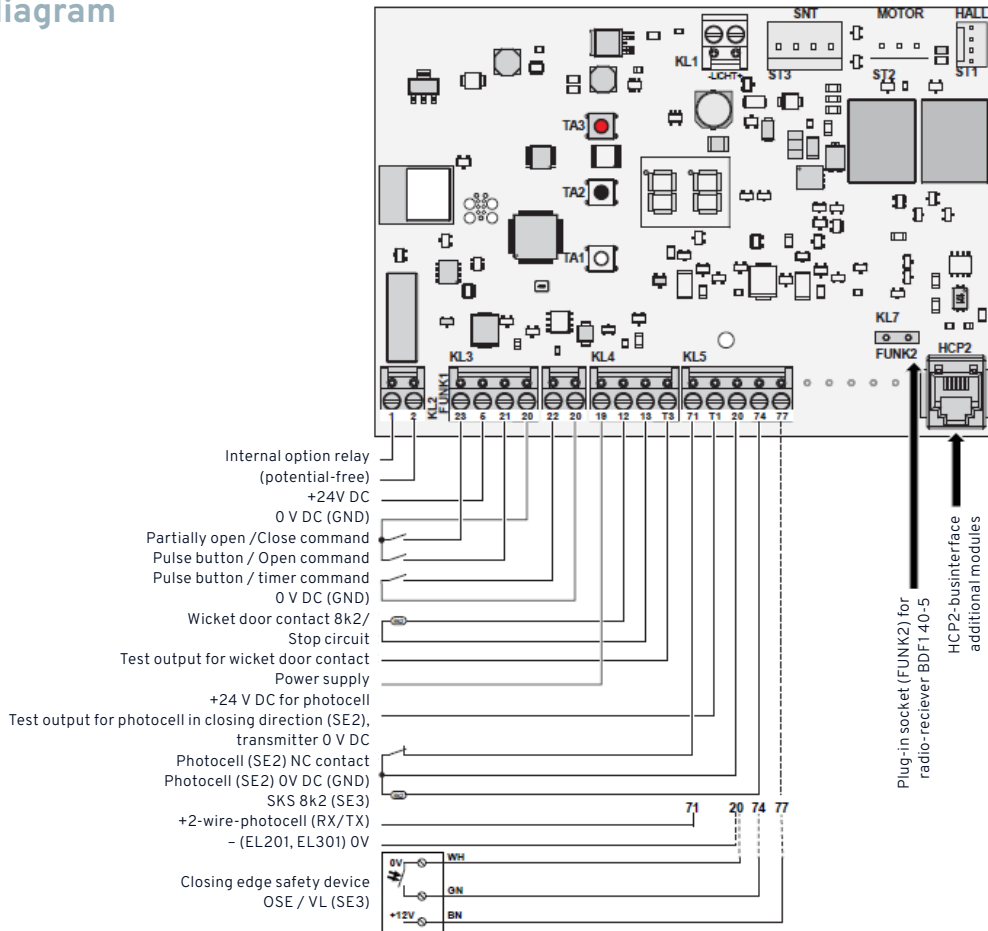
**Display**

The display is easy to read thanks to the window in the housing.

Garage door operators

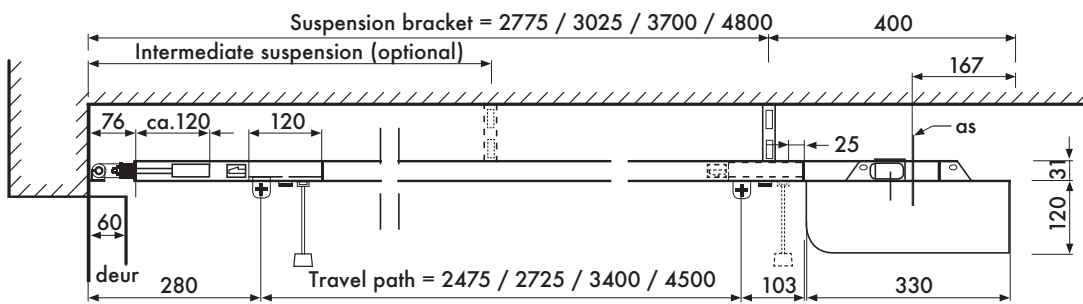


Wiring diagram

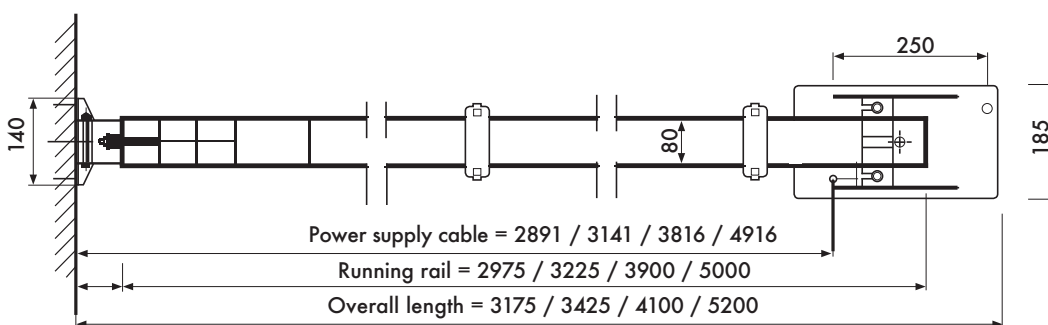


Technical drawing

Elevation view (side)



Plan view





## GTA 505-G & 505-TG

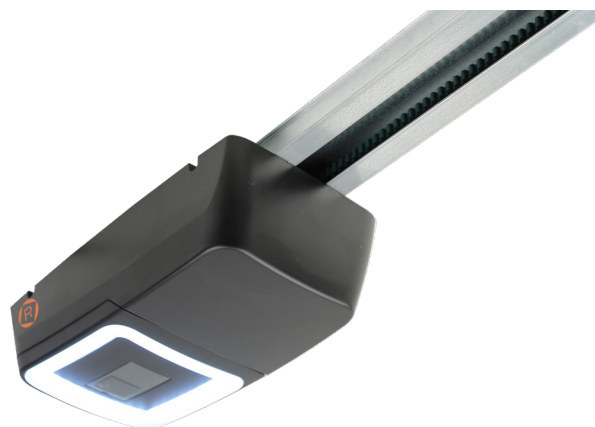
The GTA505-G is a self-locking garage door operator with a force of 1000N, suitable for garage doors up to a maximum of 15 m<sup>2</sup>, in underground parking garages with up to 30 parking spaces. The GTA505-TG, with a force of 1000N, is suitable for garage doors up to 15 m<sup>2</sup>, in underground parking garages with up to 100 parking spaces.

Both models are supplied as standard with a replaceable plug-in receiver (120 memory positions) with 4 programmable outputs and one or more hand transmitters of your choice. The terminal strip includes connections for an open/stop/close push button, a push button for partial opening, 2-wire photocell, photocell with relay contact and test input, bottom edge safety (OPTO), pedestrian door contact, programmable output relays (for example warning lighting) and power supply for external accessories.

The microprocessor control is supplied in an external housing with 8 meter cable and can be easily configured via a very extensive menu. It includes: adjustable speed (up to 22 cm/s in opening direction), energy-saving mode (consumes only 0.6W!), electronic obstacle detection, automatic closing, partial opening, adjustable soft start and soft stop, programmable inputs and outputs and much more. Please contact us for the possibilities.

Thanks to the integrated Bluetooth module, the door can be programmed via a mobile phone or tablet using the intuitive app. The app also allows you to read the door status. With the HCP2 bus interface, it is possible to operate the door via: Homematic IP Smart Home system, KNX building automation, Loxone building automation, Apple Home, Google Home and Amazon Alexa.

See accessories for the various modules.



As a drive medium, you can choose a one-piece guide rail available in 4 different lengths (see drawing). All guide rails are equipped with: reinforced toothed belt, patented anti-lift protection, emergency release and tensioning option. A one-piece guide rail in 3 lengths (up to maximum door height: 3,125 mm) is also available, equipped with: toothed strip, emergency release and tensioning option.

### Technical data

	GTA505-G	GTA505-TG
<b>Mains supply:</b>	1N~230V/240VAC-50HZ	1N~230V/240VAC-50HZ
<b>Power:</b>	400W	400W
<b>Force:</b>	1000N	1000N
<b>Max. opening speed:</b>	220MM/S	220MM/S
<b>Max. closing speed:</b>	135MM/S	135MM/S
<b>Cycles/hour:</b>	10	20
<b>Cycles/24 hours:</b>	100	350
<b>Operating temperature:</b>	-20...+60°C	-20...+60°C
<b>Noise level:</b>	<70DB	<70DB
<b>Max. door size:</b>	15M <sup>2</sup>	15M <sup>2</sup>
<b>Max. door weight:</b>	200KG	200KG
<b>Standby consumption:</b>	0,6W IN ENERGY-SAVING MODE / 0,9W WITHOUT ENERGY-SAVING MODE	0,6W IN ENERGY-SAVING MODE / 0,9W WITHOUT ENERGY-SAVING MODE

### Highlights



#### External housing

The control unit is supplied in a spacious housing with 8 meter cable and options to add additional elements.



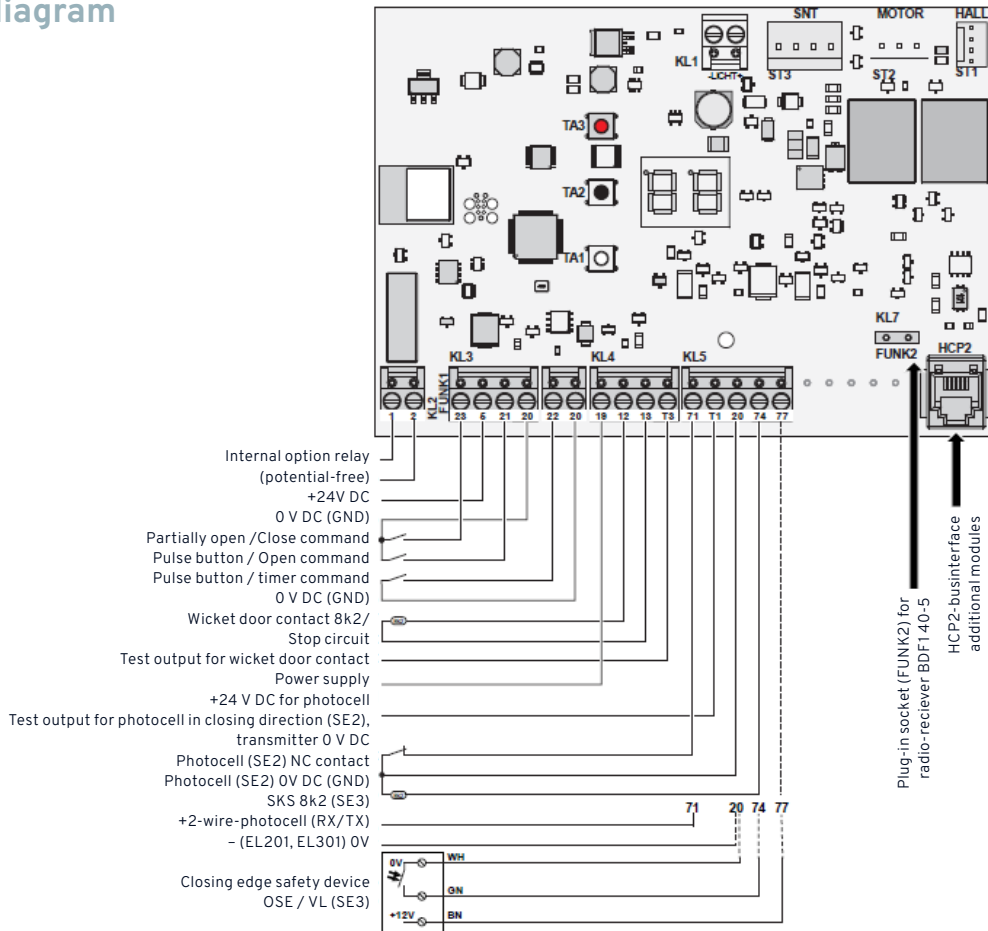
#### MS5EB-G

Expansion control in external housing with traffic control / contra-traffic control.

Garage door operators

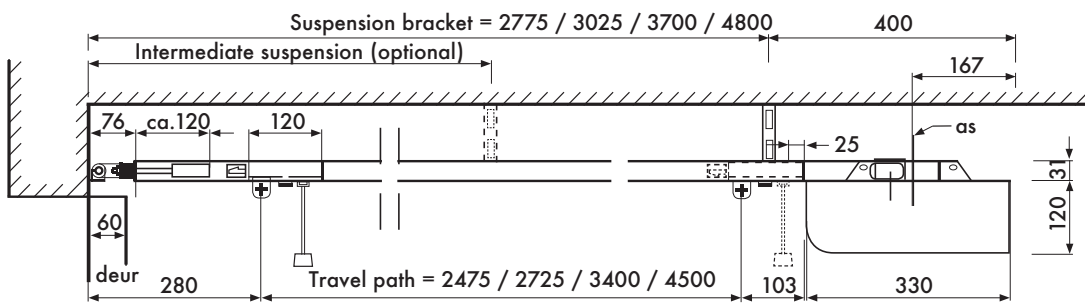


Wiring diagram

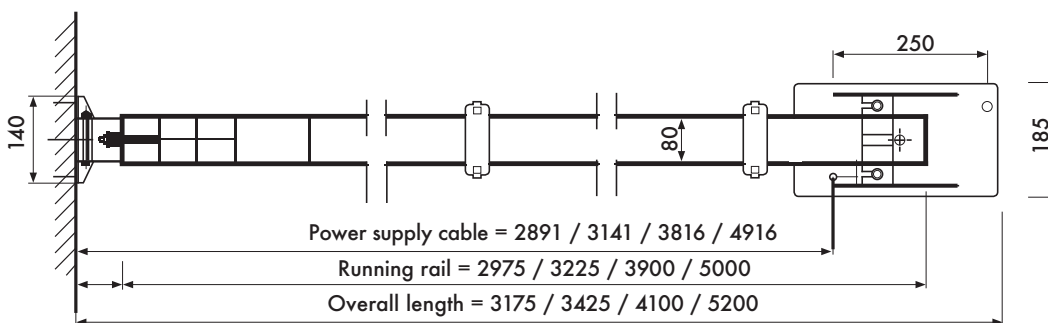


Technical drawing

Elevation view (side)



Plan view





## GTA

### Accessories



**DH258**  
(art.nr.: 513103.000015)  
Perforated rod, length: 258 mm, for extending the door connector.



**MID**  
(art.nr.: 513103.000010)  
Mounting bracket for guide rail installation.



**STB**  
(art.nr.: 513103.000023)  
Sectional door fitting for installation on the top panel.



**VLB-kit2**  
(art.nr.: 526403.000003)  
Swing door fitting with locking.



**SL-50**  
(art.nr.: 500303.000001)  
External emergency release equipped with cylinder lock, keys and cord.



**ACCU-GTA**  
(art.nr.: 513138.000001)  
Emergency battery for GTA205 and GTA405 to bridge power failure (max. 18 hours / 5 cycles).



**ACCU-GTA453**  
(art.nr.: 438738)  
Replacement battery in case for GTA453 BATTERY/ SOLAR..



**MFP5**  
(art.nr.: 513103.000030)  
Multifunction board with 2 potential-free programmable relay outputs for GTA205, GTA405 and GTA505, incl. cable (L: 200 mm).



**MPF5-G**  
(art.nr.: 513103.000031)  
Multifunction board in external housing with 2 potential-free programmable relay outputs for GTA205, GTA405 and GTA505, incl. cable (L: 2000 mm).



**MS5EB-G**  
(art.nr.: 513103.000027)  
Expansion control in external housing with contra-traffic control for GTA505, incl. mains cable and system cable.



**HOR1-HCP**  
(art.nr.: 513103.000028)  
External relay for GTA205, GTA405 and GTA505 for controlling garage lighting, signal lamp or end position signals.



**UAP1-HCP**  
(art.nr.: 513103.000029)  
Universal adapter board for GTA205, GTA405 and GTA505 for direction selection (open/stop/close) via external control elements and/or for controlling operator lighting, partial opening position and ventilation position.

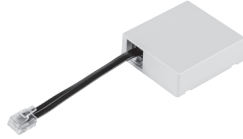


## GTA

### Accessories



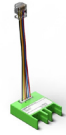
**HUB3**  
(art.nr.: 513103.000032)  
Adapter for connecting up to 3 HCP components to GTA205, GTA405 and GTA505, incl. cable (L: 300 mm).



**Homematic IP-Gateway**  
(art.nr.: 513103.000033)  
Gateway for controlling GTA205, GTA405 and GTA505 via Homematic IP Smart Home system.



**KNX-Gateway**  
(art.nr.: 513103.000034)  
Gateway for controlling GTA205, GTA405, GTA505 and controls via KNX building automation, incl. cable with plug (L: 100 mm).



**Loxone-Gateway**  
(art.nr.: 513103.000035)  
Gateway for controlling GTA205, GTA405, GTA505 and controls via Loxone building automation, incl. cable (L: 10 m).



**IT-WLAN-Gateway** (  
(art.nr.: 513103.000036)  
Indoor push button WLAN. Gateway for controlling GTA205, GTA405 and GTA505 via: Apple Home, Amazon Alexa (skill required), Google Home / Google Assistant.



**HSKI-1**  
(art.nr.: 513103.000037)  
Wired indoor sensor with LCD display for GTA205, GTA405 and GTA505 for measuring humidity in the garage.



**HSKA**  
(art.nr.: 513103.000038)  
Expandable outdoor sensor for climate sensor HSKI, incl. cable (L: 7 m).



**VLK**  
(art.nr.: 513103.000039)  
Connection cable for climate sensor, L: 15 m.



## GTA

### Accessories



**RHZ240**  
(art.nr.: 513145.000002)  
Compact 4-channel hand transmitter, 868 MHz / Keeloq.



**ART868-2K**  
(art.nr.: 521645.000168)  
Compact 2-channel hand transmitter, 868 MHz / Keeloq.



**ART868-4K**  
(art.nr.: 521645.000167)  
Compact 4-channel hand transmitter, 868 MHz / Keeloq.



**VICTORYeco-2K**  
(art.nr.: 521645.000001)  
Compact 2-channel hand transmitter, 868 MHz / Keeloq.



**VICTORYeco-4K**  
(art.nr.: 521645.000004)  
Compact 4-channel hand transmitter, 868 MHz / Keeloq.



**VICTORY868-2K**  
(art.nr.: 521645.000064)  
Compact luxury steel hand transmitter with 2 channels, 868 MHz / Keeloq. Supplied in an aluminium gift box.



**VICTORY868-4K**  
(art.nr.: 521645.000010)  
Compact luxury steel hand transmitter with 4 channels, 868 MHz / Keeloq. Supplied in an aluminium gift box.



**NEO868-2K**  
(art.nr.: 521645.000031)  
2-channel hand transmitter, 868 MHz / Keeloq.



**NEO868-4K**  
(art.nr.: 521645.000034)  
4-channel hand transmitter, 868 MHz / Keeloq.



**ART-W2**  
(art.nr.: 521645.000293)  
Wall bracket with mounting hardware for ART868-2K.



**ART-W4**  
(art.nr.: 521645.000170)  
Wall bracket with mounting hardware for ART868-4K.



**VICTORY-W**  
(art.nr.: 521645.000163)  
Wall bracket with mounting hardware for VICTORYeco and VICTORY transmitters.



## GTA

### Accessories



#### NEO-W

(art.nr.: 521645.000037)

Wall bracket with mounting hardware for NEO868 transmitters.



#### RDK868

(art.nr.: 513145.000003)

Wireless push button in white housing, 2 channels, 868 MHz / Keeloq.



#### DDK868-W

(art.nr.: 521645.000257)

Wireless push button in white housing, 3 channels, 868 MHz / Keeloq.



#### DDK868-Z

(art.nr.: 521645.000260)

Wireless push button in black housing, 3 channels, 868 MHz / Keeloq.



#### DCK868

(art.nr.: 521645.000263)

Wireless keypad with illuminated keys and 4 channels. Suitable for 868 MHz / Keeloq and 433 MHz / Keeloq systems.

## More information?

Do you want to know more about our garage door operators or other products? Just send an email to:

info@rda.eu or call  
+31 416 66 00 44.

You can also order quickly and easily via our webshop. To do so, scan the QR code.

